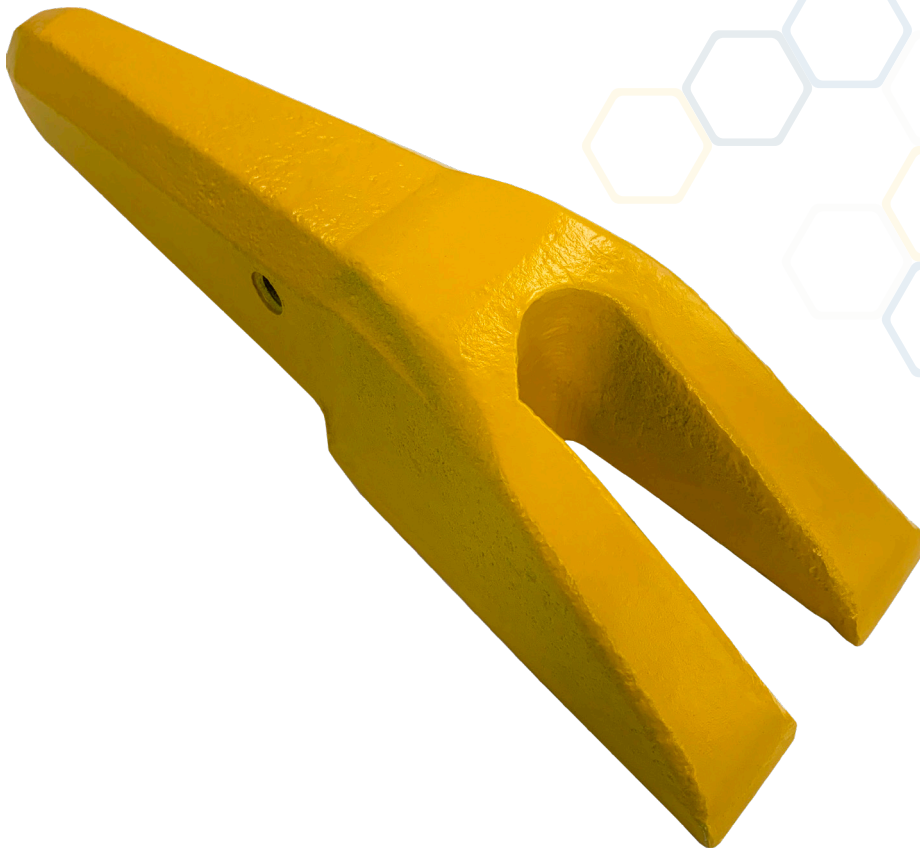




*Made Tough Since 1936*

## STANDARD PIGS FOOT



### FEATURES

- Standard pattern pigs foot used for extracting rail dog spikes from wooden sleepers
- Used in combination with a hammer to start extraction
- Also known as railroad spike remover, spike extractor or spike puller
- Strong and durable
- Heat treated slot

### SPECIFICATIONS

PART NO.	DESCRIPTION	LENGTH
5SPF	Standard Pigs Foot	240mm

